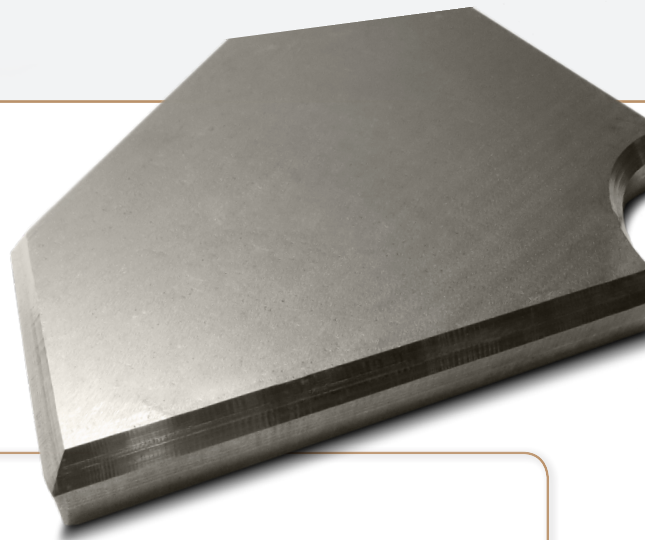


# TopEdge

## TABLE MILLING MACHINE



Quickly mill a perfect radius or bevel a welding joint preparation.



### TopEdge

The TopEdge by Q-Fin is a manually operating machine with which you can simply and quickly mill various radii or bevels under various angles. With the TopEdge you can apply a proper bevel with little effort and cost-effectively. Or you can mill the radius wanted (for example to ensure an adequate coverage of the edges when powder coating). This way you can produce in accordance with all the applicable guidelines. The TopEdge features a freely adjustable speed and a clamping table with a hole pattern. You can securely clamp workpieces on the table, in combination with the two-button control you are always working in a safe manner. Electro magnets can be optional mounted in the table for fixating steel products.



### SUITABLE FOR PROCESSING:

- Stainless steel
- Aluminium
- Steel

### DESCRIPTION

By means of the balance arm and sufficient mass of the milling head you can mill a constant and accurate radius or slanted edge with little physical effort and vibration-free. The milling head can be configured on various positions (angles) for diverse processes. Furthermore, the milling head features an intake, with which tools can be easily exchanged. Most of the available milling heads worldwide (i.e. those of BevelTools) can be used on the TopEdge. Moreover, various adapters are available.

The bevel allows for a larger welding surface, so that the consumable material can attach to more spots. Hereby, the connection between the two sheet components is improved as well as the weld fill. With this semi-automatic milling machine, it is also possible to mill a radius of choice to your product, from R=2 to R=8 (steel, aluminium or stainless steel).

### Clamping

The TopEdge is standard delivered with a hole pattern in the work surface, as you can also find in a welding table. Combined with the welding clamps, you can securely clamp the product to the work table.

As an option, we can produce the work table with 3 electromagnets so that you can fixate your steel products very quickly. Pulling force 300 kg per magnet. For products that lack material thickness to be milled, the TopTable with two magnets is available.

### 1 or 2 heads

The Q-Fin TopEdge is produced with 1 or 2 milling heads, at your choice. In the latter case, you can change between the two different radii or between milling a bevel and milling a radius very quickly. On the TopEdge you can use a wide range of standard beveling tools available.

## UNIQUE FEATURES

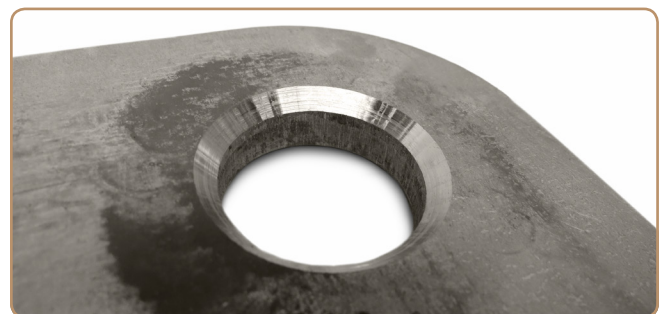
**Balance arm convenient to use**

**Fast processing times**

**Easy to operate**

**Optional TopTable with magnets**

**Clamp system with welding table pattern**



## TECHNICAL SPECIFICATIONS

Mobile setup

Standard vacuum system 2.2 kW

Optional to be equipped with 3 electromagnets

1.1 kW motor with frequency control

Also available with two milling heads

Workpiece width: max. 780 mm / length unlimited

Connection value machine: 400 V, 50 Hz, 10 A, 6 kW

Dimensions: 1435 x 1100 x 1510 mm (L x W x H)

Weight: 445 kg